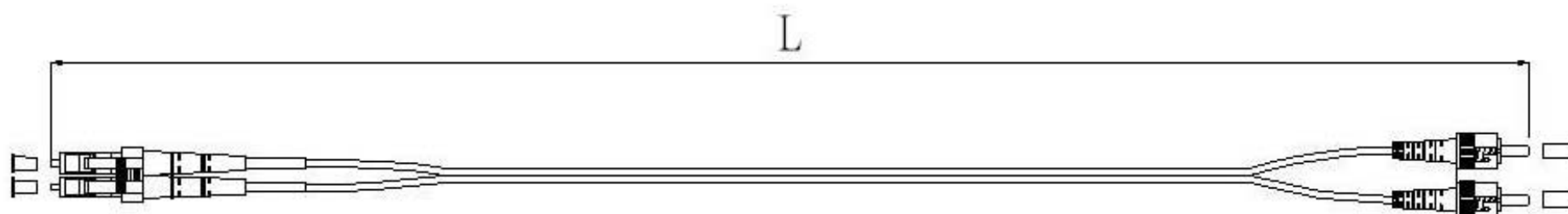


Fiber Optical Patch Cord, LC-ST, Duplex



Features

- PC, UPC or APC polishing
- Single mode fiber: ITU- T G.652, or G655, or G657
- Multi monde fiber, ITU-TG.651
- Standard housing, ceramic ferrule
- Cable diameter: 2.0×4.1(mm) or 2.8×5.7 (mm) or customized
- Fiber type: 9/125 μm (OS1), or 62.5/125μm (OM1), or 50/125μm (OM2, OM3)
- Insertion loss: Less than 0.3dB
- Return loss: UPC SM larger than 50dB
 - PC SM larger than 45dB
 - APC SM larger than 60 dB
 - PC MM larger than 20 dB
- Repeatability: Less than 0.2 dB
 - Changeability: Less than 0.1 dB
- Operating temperature range: -20°c ~ 70°c
- Storage temperature range: -40°c ~ 80°c
- Color of the jacket: SM yellow, OM1, OM1 orange, OM3 aqua, or customized
- Material of the jacket: PVC or LSZH or customized



No.	Description	Qty
①	Dust cap	4
②	Clip	1
③	Connector	4
④	Optical Cable	1

For detailed inquiry please contact our sales team at market@jfopt.com

Shenzhen Jiafu Optical Communication Co., Ltd

Add: 2nd 7Floor, Building A, Huilongda Industrial Park, Shuitian Community, Shiyuan Street, Bao'an District, Shenzhen City, Guangdong Province, China

Tel: 86-755-8357 0641 & 86-755-8357 0652 Fax: 86-755-8357 0649